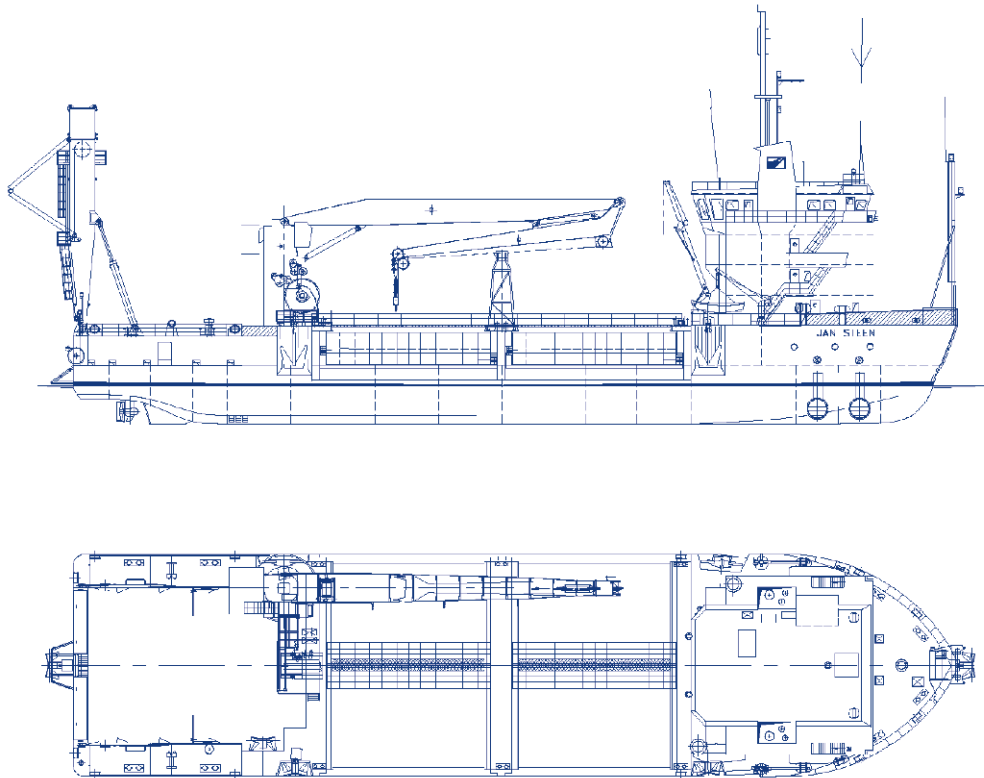




## Equipment

# Multi purpose support vessel Jan Steen



## Jan Steen

Name	Jan Steen	
Type	Multi purpose support vessel	
Classification	Bureau Veritas, 1 ✕ Hull ✕ Mach ✕ AUT-UMS ✕ ALM ✕ Dynapos - AM/AT-R special service - multi-purpose support vessel, unrestricted navigation ICE III	
Year of construction	1986	
Year of upgrading	2004	
Dimensions	Length overall	77.72 m
	Breadth overall	19.14 m
	Moulded depth	5.00 m
	Draught	4.04 m
	Moonpool	1.2 x 1 m
		7.20 x 4.80 m
Loading capacity	Bulk material	1,824 tons
	Deck space	700 m <sup>2</sup>
	Deck load	10 ton/m <sup>2</sup>
Deadweight	1,853 tons	
Speed loaded	7 kn	
Propulsion	2 x 855 kW	
Bow thrusters	2 x 600 kW	
Total power installed	4,371 kW	
Knuckle boom crane	Capacity (single/double fall) 30/60 t SWL Heave compensation (active) +/- 1.5 m @ 10 s	
	Working depth	350/175 m
	Hoisting speed	25 - 60 m/min
	Max. trim/list	5/2 degrees
	Slewing speed	0.7 rpm

Stern lifting frame	Capacity (single/double fall) 75 t/150 t SWL
	Working depth 750/350 m
	Reach outboard/inboard 11/10 m
	Lifting height 15 m
Positioning	DP Class 2, DT
Reference systems	DGPS/tautwire/H.P.R.
Accommodation	45 persons (53 optional)
Mooring system	4-points
Bunkers	Marine gas oil 431 m <sup>3</sup>
	Fresh water 131 m <sup>3</sup>

### Contact

**Van Oord**  
 PO Box 8574  
 3009 AN Rotterdam  
 The Netherlands  
**T** +31 88 8260000  
**F** +31 88 8265010  
**E** info@vanoord.com  
**I** www.vanoord.com

**Van Oord Offshore**  
 PO Box 458  
 4200 AL Gorinchem  
 The Netherlands  
**T** +31 88 8265200  
**F** +31 88 8265210  
**E** area.off@vanoord.com